

2010



two thousand and ten



CHEMICALS



PA6 for compounds, films and the fibres sector. PA66 for compounds, extrusion, films and the fibres sector.



Adipic Acid for fibres , engineering PA 66 plastics, polyurethanes, resins, plasticizers, lubricants, adhesives, additives, pharmaceutical products, pesticides, herbicides. HMDA, (intermediate for polyamides and coatings), AGS (intermediate for polyesters and solvents), Nitric Acid for metallurgy, surface treatment in steel production, galvanic industry for zinc-plating and chromium-plating , for machinery cleaning and disinfection in the dairy industry, for nitrogen fertilizer production. KAOil, Esters for biodegradable solvents, paint removers, cosmetics, detergents/cleaners, coatings, plasticizers, chemical intermediates.

PLASTICS



PA6 and PA66 polymers and copolymers for blow moulding and extrusion for applications in the industrial, electric-electronic, and automotive sectors.



PET-based thermoplastics for injection moulding for applications in the industrial, electric-electronic, and automotive sectors.



PA and PET flame retardant engineering plastics for extrusion and blow moulding for applications requiring high fire resistance especially in the electric-electronic and automotive sectors.

HERAFLEX[®] Thermoplastic elastomers SEBS, SBS and elastomeric polyolefin (PE – PP) compounds for applications in various fields from sports equipment to technical footwear, furnishings and automotive.

RADILENE[®] Recyclable and non toxic polyethylene-based infill for synthetic turf sports fields. Polyethylene-based compound for applications in the building sector.

FIBRES



Radifloor[®] PA6, PA66 and PP BCF yarns destined to the flooring sector – in the domestic, residential, and contract compartments – the automotive sector and upholstery applications.

raditeck[®] HT yarns for technical sportswear, the automotive and the industrial sectors.

radilon[®] PA yarn and staple fibre for technical and sports apparel, for underwear and home interiors' applications.

Starlight[®] PET yarns for home interiors – furniture accessories and curtains – sportswear, healthcare and medical applications, and the automotive sector.



PET microfibre – available also with permanent flame retardant properties – destined to indoor and outdoor furniture, curtains, technical wear and the automotive sector.



PET bacteriostatic nano-structured yarn, used for technical wear, sportswear, hosiery and socks.



PA/PET bicomponent yarn used in the sportswear and home interiors' sectors for fabrics with a remarkably soft touch.

The logo for RadElast, featuring the word "RadElast" in a stylized font with a red underline under "Rad" and a red swoosh under "Elast".

Elastane (spandex) fibres used for activewear, swimwear, intimate apparel, shapewear, ready-to-wear, narrow fabrics, hosiery and socks, industrial, diapers and other healthcare applications.

The logo for CRYLOR, featuring the word "CRYLOR" in a bold, black, sans-serif font with a red swoosh under "LOR".

Acrylic fibre and acrylic staple fibre for technical and sportswear, for the knitting sector and home interiors' applications.

The logo for RADI GREEN, featuring the words "RADI GREEN" in a bold, black, sans-serif font with a green outline around the letters.

PP, PE and PA yarns for synthetic turf for indoor or outdoor sports and playing fields, for home interiors and for landscaping applications.

A yellow speech bubble containing the word "TEXTILES" in a bold, black, sans-serif font. A small black circle with a yellow center is located at the bottom right of the bubble.

TEXTILES

The logo for DYLAR, featuring the word "DYLAR" in a bold, black, sans-serif font with a stylized "Y" and "L" that have horizontal lines through them.

PP spunbond nonwoven fabrics for applications in the medical and healthcare sectors, in the building sector, in home interiors' applications and in disposable clothes.

The logo for RADICI TESSUTI, featuring the word "RADICI" in a bold, black, sans-serif font and "TESSUTI" in a bold, black, sans-serif font inside a yellow rectangular box with a black border.

PA6, PA66, and PET microfibre fabrics for apparel and linings.

Radici Partecipazioni SPA

Via Ugo Foscolo, 152

It - 24024 Gandino (BG)

phone +39 035 715411 - fax +39 035 715477

e-mail: info@radicigroup.com - www.radicigroup.com

Via Ca' Antonelli, 55

It - 24024 Gandino (BG)

phone +39 035 715411 - fax +39 035 715477

e-mail: info@radicigroup.com - www.radicigroup.com

JANUARY

1 2 3 4 5 6 7 8 9 10 11 12 13 14 15 16 17 18 19 20 21 22 23 24 25 26 27 28 29 30 31

FEBRUARY

1 2 3 4 5 6 7 8 9 10 11 12 13 14 15 16 17 18 19 20 21 22 23 24 25 26 27 28

MARCH

1 2 3 4 5 6 7 8 9 10 11 12 13 14 15 16 17 18 19 20 21 22 23 24 25 26 27 28 29 30 31

APRIL

1 2 3 4 5 6 7 8 9 10 11 12 13 14 15 16 17 18 19 20 21 22 23 24 25 26 27 28 29 30

MAY

1 2 3 4 5 6 7 8 9 10 11 12 13 14 15 16 17 18 19 20 21 22 23 24 25 26 27 28 29 30 31

JUNE

1 2 3 4 5 6 7 8 9 10 11 12 13 14 15 16 17 18 19 20 21 22 23 24 25 26 27 28 29 30

JULY

1 2 3 4 5 6 7 8 9 10 11 12 13 14 15 16 17 18 19 20 21 22 23 24 25 26 27 28 29 30 31

AUGUST

1 2 3 4 5 6 7 8 9 10 11 12 13 14 15 16 17 18 19 20 21 22 23 24 25 26 27 28 29 30 31

SEPTEMBER

1 2 3 4 5 6 7 8 9 10 11 12 13 14 15 16 17 18 19 20 21 22 23 24 25 26 27 28 29 30

OCTOBER

1 2 3 4 5 6 7 8 9 10 11 12 13 14 15 16 17 18 19 20 21 22 23 24 25 26 27 28 29 30 31

NOVEMBER

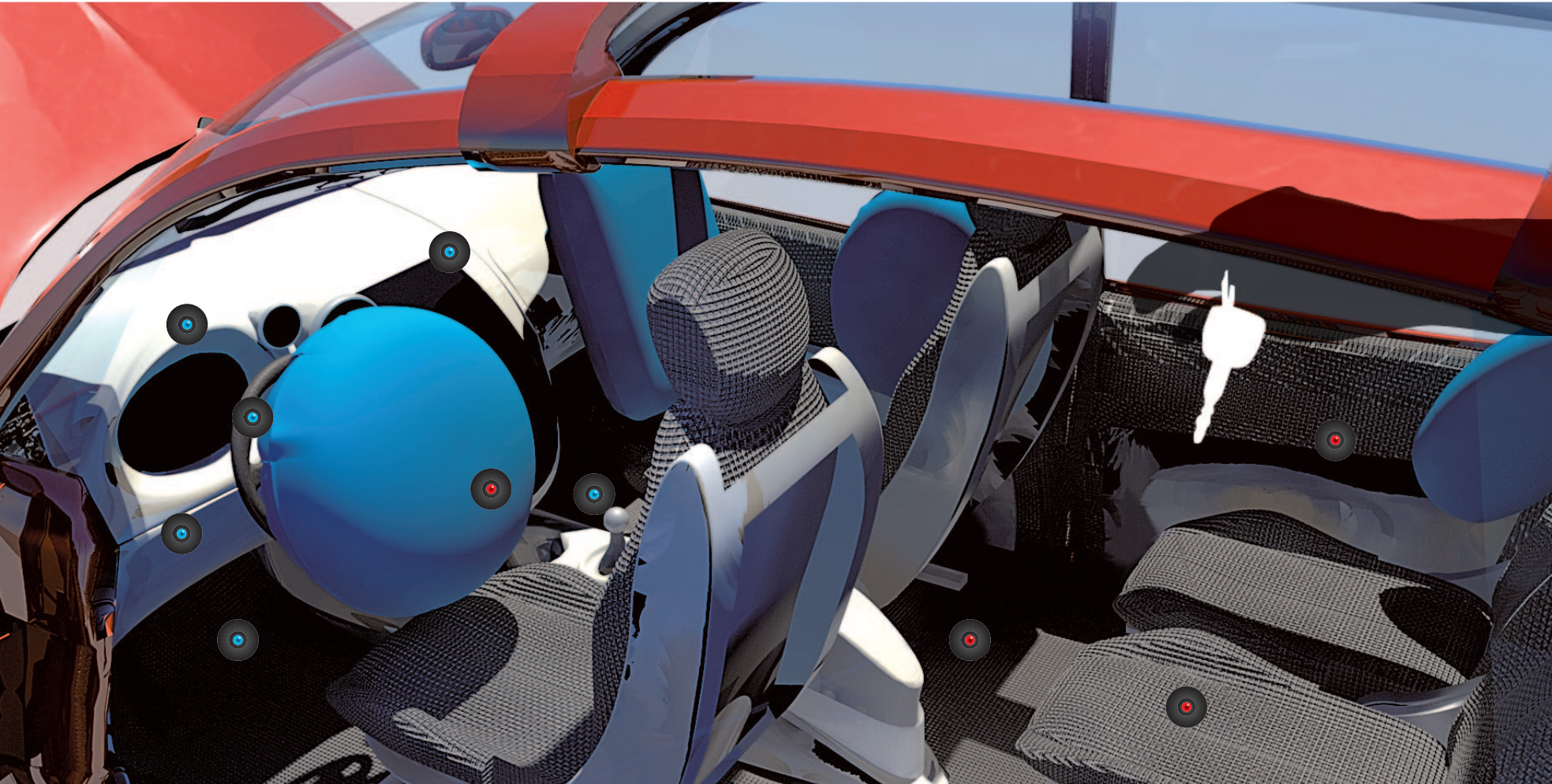
1 2 3 4 5 6 7 8 9 10 11 12 13 14 15 16 17 18 19 20 21 22 23 24 25 26 27 28 29 30

DECEMBER

1 2 3 4 5 6 7 8 9 10 11 12 13 14 15 16 17 18 19 20 21 22 23 24 25 26 27 28 29 30 31

2010





RAD **YARN**® *Radifloor* **raditeck** INDUSTRIAL ★ *Starlight*® HERAFLEX®



DEC 2009

Mon

Tue

Wed

Thu

Fri

Sat

Sun

FEB 2010

TUE 1
 WED 2
 THU 3
 FRI 4
 SAT 5
 SUN 6
 MON 7
 TUE 8
 WED 9
 THU 10
 FRI 11
 SAT 12
 SUN 13
 MON 14
 TUE 15
 WED 16
 THU 17
 FRI 18
 SAT 19
 SUN 20
 MON 21
 TUE 22
 WED 23
 THU 24
 FRI 25
 SAT 26
 SUN 27
 MON 28
 TUE 29
 WED 30
 THU 31

Mon	Tue	Wed	Thu	Fri	Sat	Sun
28	29	30	31	1	2	3
4	5	6	7	8	9	10
11	12	13	14	15	16	17
18	19	20	21	22	23	24
25	26	27	28	29	30	31

MON 1
 TUE 2
 WED 3
 THU 4
 FRI 5
 SAT 6
 SUN 7
 MON 8
 TUE 9
 WED 10
 THU 11
 FRI 12
 SAT 13
 SUN 14
 MON 15
 TUE 16
 WED 17
 THU 18
 FRI 19
 SAT 20
 SUN 21
 MON 22
 TUE 23
 WED 24
 THU 25
 FRI 26
 SAT 27
 SUN 28

JANUARY





radilon®

nano⁺feel[®]
Bacteriostatic Yarn

JAN 2010

Mon

Tue

Wed

Thu

Fri

Sat

Sun

MAR 2010

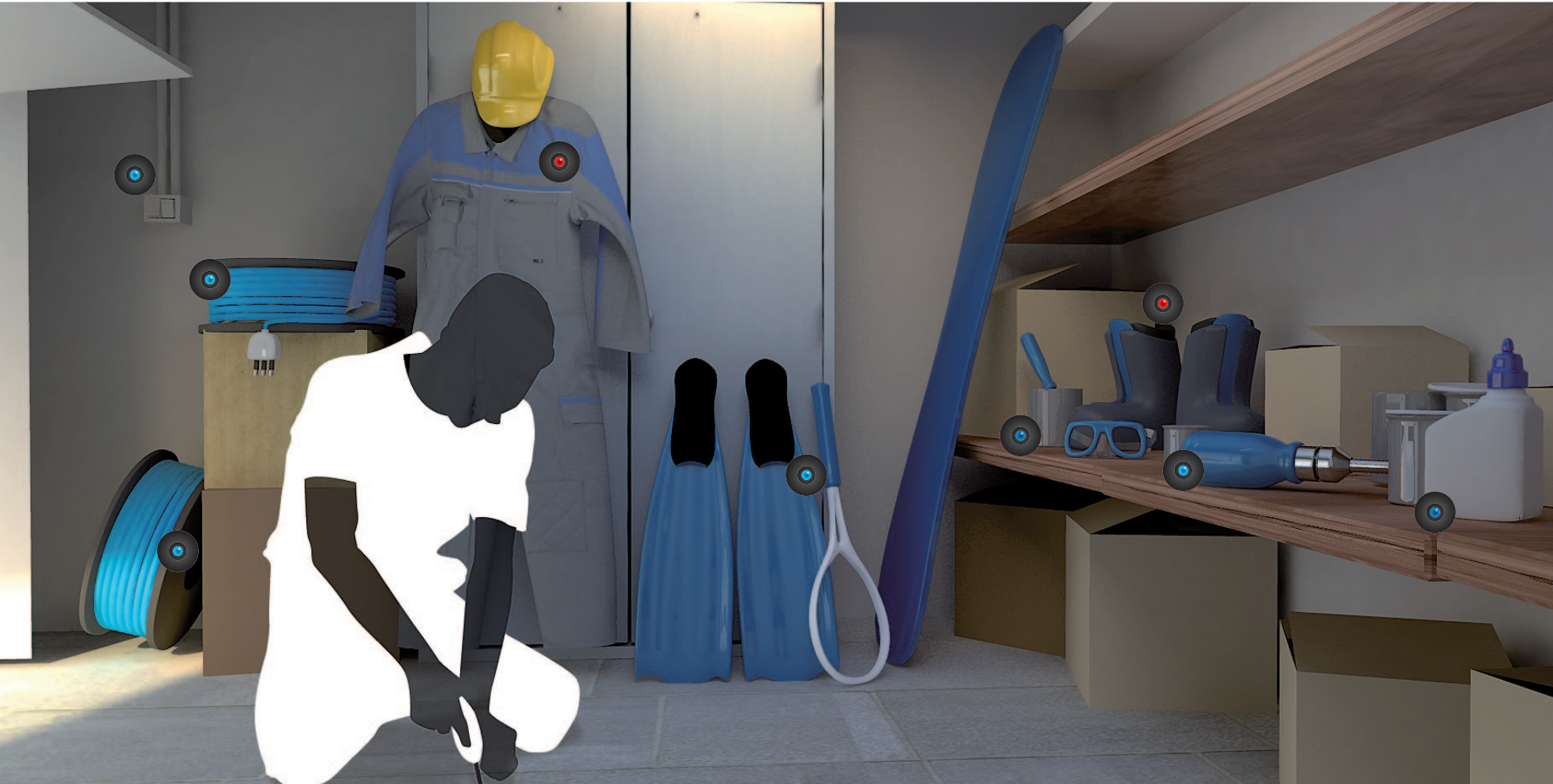
FRI 1
 SAT 2
 SUN 3
 MON 4
 TUE 5
 WED 6
 THU 7
 FRI 8
 SAT 9
 SUN 10
 MON 11
 TUE 12
 WED 13
 THU 14
 FRI 15
 SAT 16
 SUN 17
 MON 18
 TUE 19
 WED 20
 THU 21
 FRI 22
 SAT 23
 SUN 24
 MON 25
 TUE 26
 WED 27
 THU 28
 FRI 29
 SAT 30
 SUN 31

1	2	3	4	5	6	7
8	9	10	11	12	13	14
15	16	17	18	19	20	21
22	23	24	25	26	27	28
1	2	3	4	5	6	7

MON 1
 TUE 2
 WED 3
 THU 4
 FRI 5
 SAT 6
 SUN 7
 MON 8
 TUE 9
 WED 10
 THU 11
 FRI 12
 SAT 13
 SUN 14
 MON 15
 TUE 16
 WED 17
 THU 18
 FRI 19
 SAT 20
 SUN 21
 MON 22
 TUE 23
 WED 24
 THU 25
 FRI 26
 SAT 27
 SUN 28
 MON 29
 TUE 30
 WED 31

FEBRUARY





raditeck[®]



FEB 2010

Mon

Tue

Wed

Thu

Fri

Sat

Sun

APR 2010

MON 1
 TUE 2
 WED 3
 THU 4
 FRI 5
 SAT 6
 SUN 7
 MON 8
 TUE 9
 WED 10
 THU 11
 FRI 12
 SAT 13
 SUN 14
 MON 15
 TUE 16
 WED 17
 THU 18
 FRI 19
 SAT 20
 SUN 21
 MON 22
 TUE 23
 WED 24
 THU 25
 FRI 26
 SAT 27
 SUN 28

1	2	3	4	5	6	7
8	9	10	11	12	13	14
15	16	17	18	19	20	21
22	23	24	25	26	27	28
29	30	31	1	2	3	4

11
 THU 1
 FRI 2
 SAT 3
 SUN 4
 MON 5
 TUE 6
 WED 7
 THU 8
 FRI 9
 SAT 10
 SUN 11
 MON 12
 TUE 13
 WED 14
 THU 15
 FRI 16
 SAT 17
 SUN 18
 MON 19
 TUE 20
 WED 21
 THU 22
 FRI 23
 SAT 24
 SUN 25
 MON 26
 TUE 27
 WED 28
 THU 29
 FRI 30

MARCH





Radifloor
radilon®



RADYARN®

nano+feel®
Bacteriostatic Yarn

MAR 2010

Mon

Tue

Wed

Thu

Fri

Sat

Sun

MAY 2010

MON 1
 TUE 2
 WED 3
 THU 4
 FRI 5
 SAT 6
 SUN 7
 MON 8
 TUE 9
 WED 10
 THU 11
 FRI 12
 SAT 13
 SUN 14
 MON 15
 TUE 16
 WED 17
 THU 18
 FRI 19
 SAT 20
 SUN 21
 MON 22
 TUE 23
 WED 24
 THU 25
 FRI 26
 SAT 27
 SUN 28
 MON 29
 TUE 30
 WED 31

28	29	30	1	2	3	4	
5	6	7	8	9	10	11	
12	13	14	15	16	17	18	
19	20	21	22	23	24	25	
26	27	28	29	30	1	2	

SAT 1
 SUN 2
 MON 3
 TUE 4
 WED 5
 THU 6
 FRI 7
 SAT 8
 SUN 9
 MON 10
 TUE 11
 WED 12
 THU 13
 FRI 14
 SAT 15
 SUN 16
 MON 17
 TUE 18
 WED 19
 THU 20
 FRI 21
 SAT 22
 SUN 23
 MON 24
 TUE 25
 WED 26
 THU 27
 FRI 28
 SAT 29
 SUN 30
 MON 31

APRIL





radilon®



APR 2010

Mon

Tue

Wed

Thu

Fri

Sat

Sun

JUN 2010

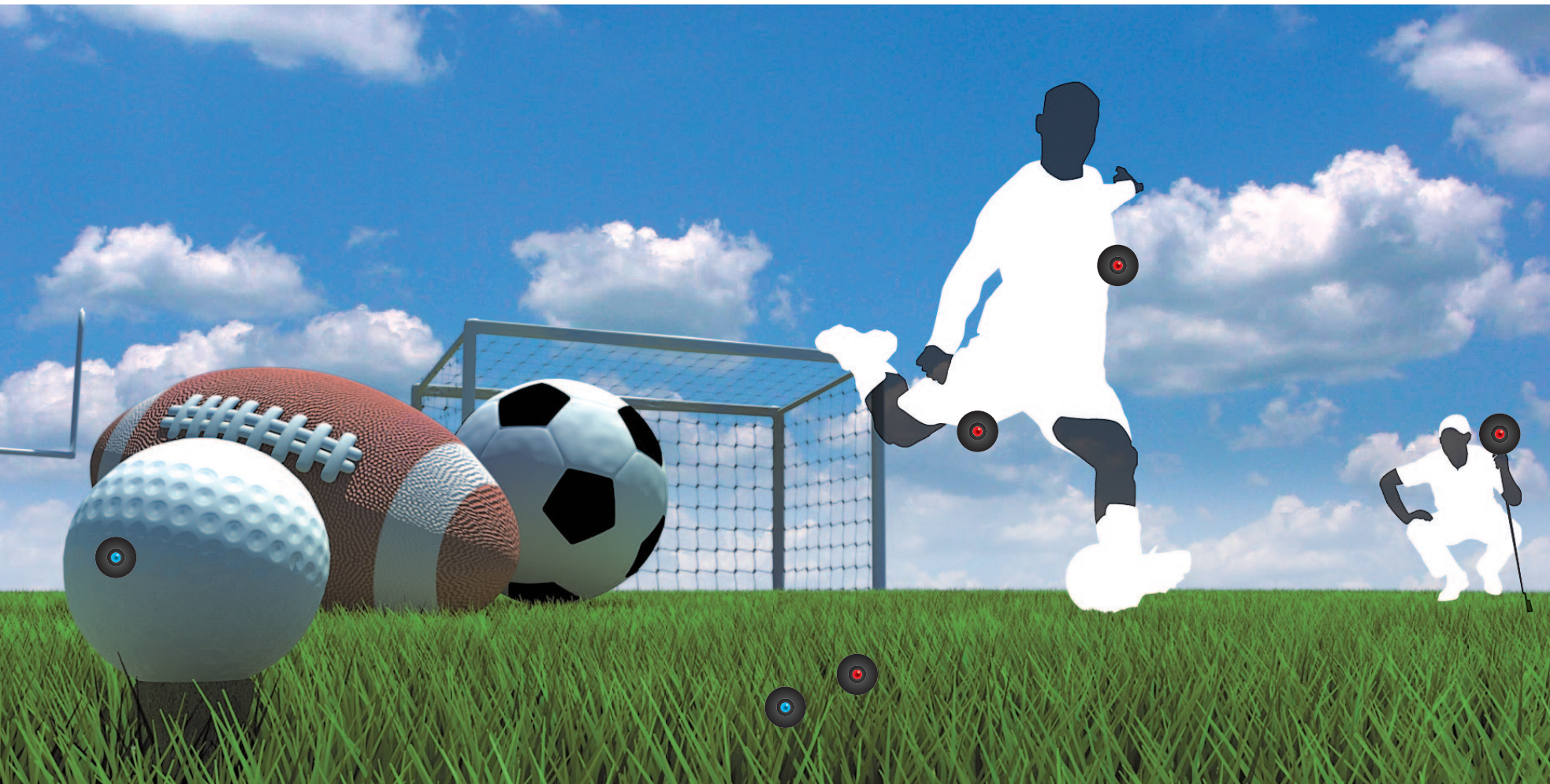
THU 1
 FRI 2
 SAT 3
 SUN 4
 MON 5
 TUE 6
 WED 7
 THU 8
 FRI 9
 SAT 10
 SUN 11
 MON 12
 TUE 13
 WED 14
 THU 15
 FRI 16
 SAT 17
 SUN 18
 MON 19
 TUE 20
 WED 21
 THU 22
 FRI 23
 SAT 24
 SUN 25
 MON 26
 TUE 27
 WED 28
 THU 29
 FRI 30

26	27	28	29	30	1	2
3 31	4	5	6	7	8	9
10	11	12	13	14	15	16
17	18	19	20	21	22	23
24	25	26	27	28	29	30

19
 TUE 1
 WED 2
 THU 3
 FRI 4
 SAT 5
 SUN 6
 MON 7
 TUE 8
 WED 9
 THU 10
 FRI 11
 SAT 12
 SUN 13
 MON 14
 TUE 15
 WED 16
 THU 17
 FRI 18
 SAT 19
 SUN 20
 MON 21
 TUE 22
 WED 23
 THU 24
 FRI 25
 SAT 26
 SUN 27
 MON 28
 TUE 29
 WED 30
 20
 21
 22
 23

MAY





HERAFLEX®

RADILENE®

radilon®

nano⁺feel®
Bacteriostatic Yarn

RADI GREEN®

MAY 2010

Mon

Tue

Wed

Thu

Fri

Sat

Sun

JUL 2010

SAT 1
 SUN 2
 MON 3
 TUE 4
 WED 5
 THU 6
 FRI 7
 SAT 8
 SUN 9
 MON 10
 TUE 11
 WED 12
 THU 13
 FRI 14
 SAT 15
 SUN 16
 MON 17
 TUE 18
 WED 19
 THU 20
 FRI 21
 SAT 22
 SUN 23
 MON 24
 TUE 25
 WED 26
 THU 27
 FRI 28
 SAT 29
 SUN 30
 MON 31

Mon	Tue	Wed	Thu	Fri	Sat	Sun
31	1	2	3	4	5	6
7	8	9	10	11	12	13
14	15	16	17	18	19	20
21	22	23	24	25	26	27
28	29	30	1	2	3	4

THU 1
 FRI 2
 SAT 3
 SUN 4
 MON 5
 TUE 6
 WED 7
 THU 8
 FRI 9
 SAT 10
 SUN 11
 MON 12
 TUE 13
 WED 14
 THU 15
 FRI 16
 SAT 17
 SUN 18
 MON 19
 TUE 20
 WED 21
 THU 22
 FRI 23
 SAT 24
 SUN 25
 MON 26
 TUE 27
 WED 28
 THU 29
 FRI 30
 SAT 31

JUNE





JUN 2010

Mon

Tue

Wed

Thu

Fri

Sat

Sun

AUG 2010

TUE 1
 WED 2
 THU 3
 FRI 4
 SAT 5
 SUN 6
 MON 7
 TUE 8
 WED 9
 THU 10
 FRI 11
 SAT 12
 SUN 13
 MON 14
 TUE 15
 WED 16
 THU 17
 FRI 18
 SAT 19
 SUN 20
 MON 21
 TUE 22
 WED 23
 THU 24
 FRI 25
 SAT 26
 SUN 27
 MON 28
 TUE 29
 WED 30

28	29	30	1	2	3	4
5	6	7	8	9	10	11
12	13	14	15	16	17	18
19	20	21	22	23	24	25
26	27	28	29	30	31	1

SUN 1
 MON 2
 TUE 3
 WED 4
 THU 5
 FRI 6
 SAT 7
 SUN 8
 MON 9
 TUE 10
 WED 11
 THU 12
 FRI 13
 SAT 14
 SUN 15
 MON 16
 TUE 17
 WED 18
 THU 19
 FRI 20
 SAT 21
 SUN 22
 MON 23
 TUE 24
 WED 25
 THU 26
 FRI 27
 SAT 28
 SUN 29
 MON 30
 TUE 31

JULY





JUL 2010

Mon

Tue

Wed

Thu

Fri

Sat

Sun

SEP 2010

THU 1
 FRI 2
 SAT 3
 SUN 4
 MON 5
 TUE 6
 WED 7
 THU 8
 FRI 9
 SAT 10
 SUN 11
 MON 12
 TUE 13
 WED 14
 THU 15
 FRI 16
 SAT 17
 SUN 18
 MON 19
 TUE 20
 WED 21
 THU 22
 FRI 23
 SAT 24
 SUN 25
 MON 26
 TUE 27
 WED 28
 THU 29
 FRI 30
 SAT 31

26	27	28	29	30	31	1
2 30	3 31	4	5	6	7	8
9	10	11	12	13	14	15
16	17	18	19	20	21	22
23	24	25	26	27	28	29

32 WED 1
 THU 2
 FRI 3
 SAT 4
 SUN 5
 MON 6
 TUE 7
 WED 8
 THU 9
 FRI 10
 SAT 11
 SUN 12
 MON 13
 TUE 14
 WED 15
 THU 16
 FRI 17
 SAT 18
 SUN 19
 MON 20
 TUE 21
 WED 22
 THU 23
 FRI 24
 SAT 25
 SUN 26
 MON 27
 TUE 28
 WED 29
 THU 30

AUGUST





HERAFLEX®

RadElast®

radilon®

nano⁺feel®
Bacteriostatic Yarn



AUG 2010

Mon

Tue

Wed

Thu

Fri

Sat

Sun

OCT 2010

SUN 1
 MON 2
 TUE 3
 WED 4
 THU 5
 FRI 6
 SAT 7
 SUN 8
 MON 9
 TUE 10
 WED 11
 THU 12
 FRI 13
 SAT 14
 SUN 15
 MON 16
 TUE 17
 WED 18
 THU 19
 FRI 20
 SAT 21
 SUN 22
 MON 23
 TUE 24
 WED 25
 THU 26
 FRI 27
 SAT 28
 SUN 29
 MON 30
 TUE 31

Mon	Tue	Wed	Thu	Fri	Sat	Sun
30	31	1	2	3	4	5
6	7	8	9	10	11	12
13	14	15	16	17	18	19
20	21	22	23	24	25	26
27	28	29	30	1	2	3

37

38

39

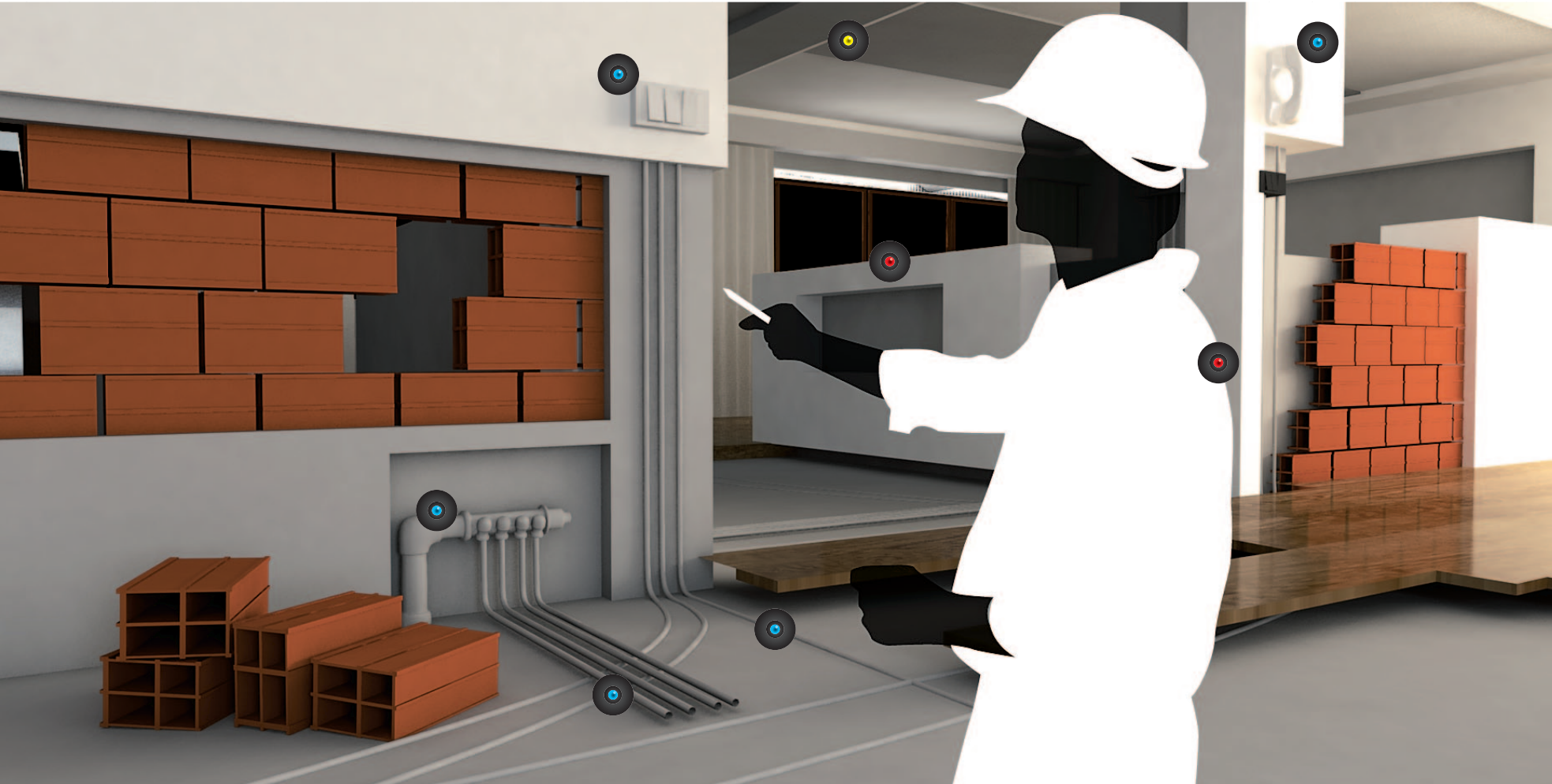
40

41

FRI 1
 SAT 2
 SUN 3
 MON 4
 TUE 5
 WED 6
 THU 7
 FRI 8
 SAT 9
 SUN 10
 MON 11
 TUE 12
 WED 13
 THU 14
 FRI 15
 SAT 16
 SUN 17
 MON 18
 TUE 19
 WED 20
 THU 21
 FRI 22
 SAT 23
 SUN 24
 MON 25
 TUE 26
 WED 27
 THU 28
 FRI 29
 SAT 30
 SUN 31

SEPTEMBER





SEP 2010

Mon

Tue

Wed

Thu

Fri

Sat

Sun

NOV 2010

WED 1
 THU 2
 FRI 3
 SAT 4
 SUN 5
 MON 6
 TUE 7
 WED 8
 THU 9
 FRI 10
 SAT 11
 SUN 12
 MON 13
 TUE 14
 WED 15
 THU 16
 FRI 17
 SAT 18
 SUN 19
 MON 20
 TUE 21
 WED 22
 THU 23
 FRI 24
 SAT 25
 SUN 26
 MON 27
 TUE 28
 WED 29
 THU 30

27

28

29

30

1

2

3

41

4

5

6

7

8

9

10

42

11

12

13

14

15

16

17

43

18

19

20

21

22

23

24

44

25

26

27

28

29

30

31

45

MON 1
 TUE 2
 WED 3
 THU 4
 FRI 5
 SAT 6
 SUN 7
 MON 8
 TUE 9
 WED 10
 THU 11
 FRI 12
 SAT 13
 SUN 14
 MON 15
 TUE 16
 WED 17
 THU 18
 FRI 19
 SAT 20
 SUN 21
 MON 22
 TUE 23
 WED 24
 THU 25
 FRI 26
 SAT 27
 SUN 28
 MON 29
 TUE 30

OCTOBER





★ **Starlight**[®]
CRYLOR

RADYARN[®]

Radifloor

DYLAR[®]

RADITER[®]

RADIFLAM[®]

RADILON[®]

OCT 2010

Mon

Tue

Wed

Thu

Fri

Sat

Sun

DEC 2010

FRI 1
 SAT 2
 SUN 3
 MON 4
 TUE 5
 WED 6
 THU 7
 FRI 8
 SAT 9
 SUN 10
 MON 11
 TUE 12
 WED 13
 THU 14
 FRI 15
 SAT 16
 SUN 17
 MON 18
 TUE 19
 WED 20
 THU 21
 FRI 22
 SAT 23
 SUN 24
 MON 25
 TUE 26
 WED 27
 THU 28
 FRI 29
 SAT 30
 SUN 31

Mon	Tue	Wed	Thu	Fri	Sat	Sun
1	2	3	4	5	6	7
8	9	10	11	12	13	14
15	16	17	18	19	20	21
22	23	24	25	26	27	28
29	30	1	2	3	4	5

46

47

48

49

50

WED 1
 THU 2
 FRI 3
 SAT 4
 SUN 5
 MON 6
 TUE 7
 WED 8
 THU 9
 FRI 10
 SAT 11
 SUN 12
 MON 13
 TUE 14
 WED 15
 THU 16
 FRI 17
 SAT 18
 SUN 19
 MON 20
 TUE 21
 WED 22
 THU 23
 FRI 24
 SAT 25
 SUN 26
 MON 27
 TUE 28
 WED 29
 THU 30
 FRI 31

NOVEMBER





RADYARN[®]



NOV 2010

Mon

Tue

Wed

Thu

Fri

Sat

Sun

JAN 2011

MON 1
 TUE 2
 WED 3
 THU 4
 FRI 5
 SAT 6
 SUN 7
 MON 8
 TUE 9
 WED 10
 THU 11
 FRI 12
 SAT 13
 SUN 14
 MON 15
 TUE 16
 WED 17
 THU 18
 FRI 19
 SAT 20
 SUN 21
 MON 22
 TUE 23
 WED 24
 THU 25
 FRI 26
 SAT 27
 SUN 28
 MON 29
 TUE 30

Mon	Tue	Wed	Thu	Fri	Sat	Sun
29	30	1	2	3	4	5
6	7	8	9	10	11	12
13	14	15	16	17	18	19
20	21	22	23	24	25	26
27	28	29	30	31	1	2

50

51

52

53

54

WED 1
 THU 2
 FRI 3
 SAT 4
 SUN 5
 MON 6
 TUE 7
 WED 8
 THU 9
 FRI 10
 SAT 11
 SUN 12
 MON 13
 TUE 14
 WED 15
 THU 16
 FRI 17
 SAT 18
 SUN 19
 MON 20
 TUE 21
 WED 22
 THU 23
 FRI 24
 SAT 25
 SUN 26
 MON 27
 TUE 28
 WED 29
 THU 30
 FRI 31

DECEMBER



JANUARY

1 2 3 4 5 6 7 8 9 10 11 12 13 14 15 16 17 18 19 20 21 22 23 24 25 26 27 28 29 30 31

FEBRUARY

1 2 3 4 5 6 7 8 9 10 11 12 13 14 15 16 17 18 19 20 21 22 23 24 25 26 27 28

MARCH

1 2 3 4 5 6 7 8 9 10 11 12 13 14 15 16 17 18 19 20 21 22 23 24 25 26 27 28 29 30 31

APRIL

1 2 3 4 5 6 7 8 9 10 11 12 13 14 15 16 17 18 19 20 21 22 23 24 25 26 27 28 29 30

MAY

1 2 3 4 5 6 7 8 9 10 11 12 13 14 15 16 17 18 19 20 21 22 23 24 25 26 27 28 29 30 31

JUNE

1 2 3 4 5 6 7 8 9 10 11 12 13 14 15 16 17 18 19 20 21 22 23 24 25 26 27 28 29 30

JULY

1 2 3 4 5 6 7 8 9 10 11 12 13 14 15 16 17 18 19 20 21 22 23 24 25 26 27 28 29 30 31

AUGUST

1 2 3 4 5 6 7 8 9 10 11 12 13 14 15 16 17 18 19 20 21 22 23 24 25 26 27 28 29 30 31

SEPTEMBER

1 2 3 4 5 6 7 8 9 10 11 12 13 14 15 16 17 18 19 20 21 22 23 24 25 26 27 28 29 30

OCTOBER

1 2 3 4 5 6 7 8 9 10 11 12 13 14 15 16 17 18 19 20 21 22 23 24 25 26 27 28 29 30 31

NOVEMBER

1 2 3 4 5 6 7 8 9 10 11 12 13 14 15 16 17 18 19 20 21 22 23 24 25 26 27 28 29 30

DECEMBER

1 2 3 4 5 6 7 8 9 10 11 12 13 14 15 16 17 18 19 20 21 22 23 24 25 26 27 28 29 30 31

2011

